



HEC Company Presentation (3032)

Green Earth Green Power Green HEC

- 2021.12.13
- HEC Group



Statement

This power point provide information include the estimated and estimated data, because of it has uncertain reasons, it possible cause the different between reality and PPT date.



Company Snapshot

Established	1979 / 02/16
Capital	NT\$ 1,132,856,260
Staffs	3000
Headquarter	No.225, Ln. 54, Sec. 2, Anhe Rd., Annan Dist., Tainan City 709, Taiwan (R.O.C.)
Factory location	Tainan, Dongguan, Yongfeng
Main product	Server Case, Gaming Case, PSU, Medical equipment and Home furniture





HEC Milestone

1979	● Established
1989	● Import computer case design and development technology
1996	● To Establish professional case manufactory in Shenzhen ● Obtained ISO9002 certification
1997	● Import PSU design and development technology
1998-1999	● To Establish professional PSU manufactory in Shenzhen ● Obtained ISO9001 certification
2001-2002	● listed company at OTC and TWSE
2010	● To Establish professional transformer manufactory in Jiangxi ● Obtained ISO14001 certification
2012	● Obtained OHSAS18001 certification
2015	● To Establish second professional PSU manufactory in Dongguan
2016	● Acquired Optima Ltd., 60% stock in April ● Acquired LFE Ltd., 50.48% stock in June
2018	● Moving the plant from Shenzhen to Dongguan ● To Establish professional PSU manufactory in Jiangxi
2019	● To Establish professional case and PSU manufactory in Taiwan
2020	● To Establish WCF in Jiangxi

HEC GROUP



Gaming Chassis



Server Chassis



Power Supply



Gaming Own Brand



Server Rack Enclosure



Storage



Server Chassis



CNC



POS



Medical Bed



Long-Term Care Bed



Medical Chair

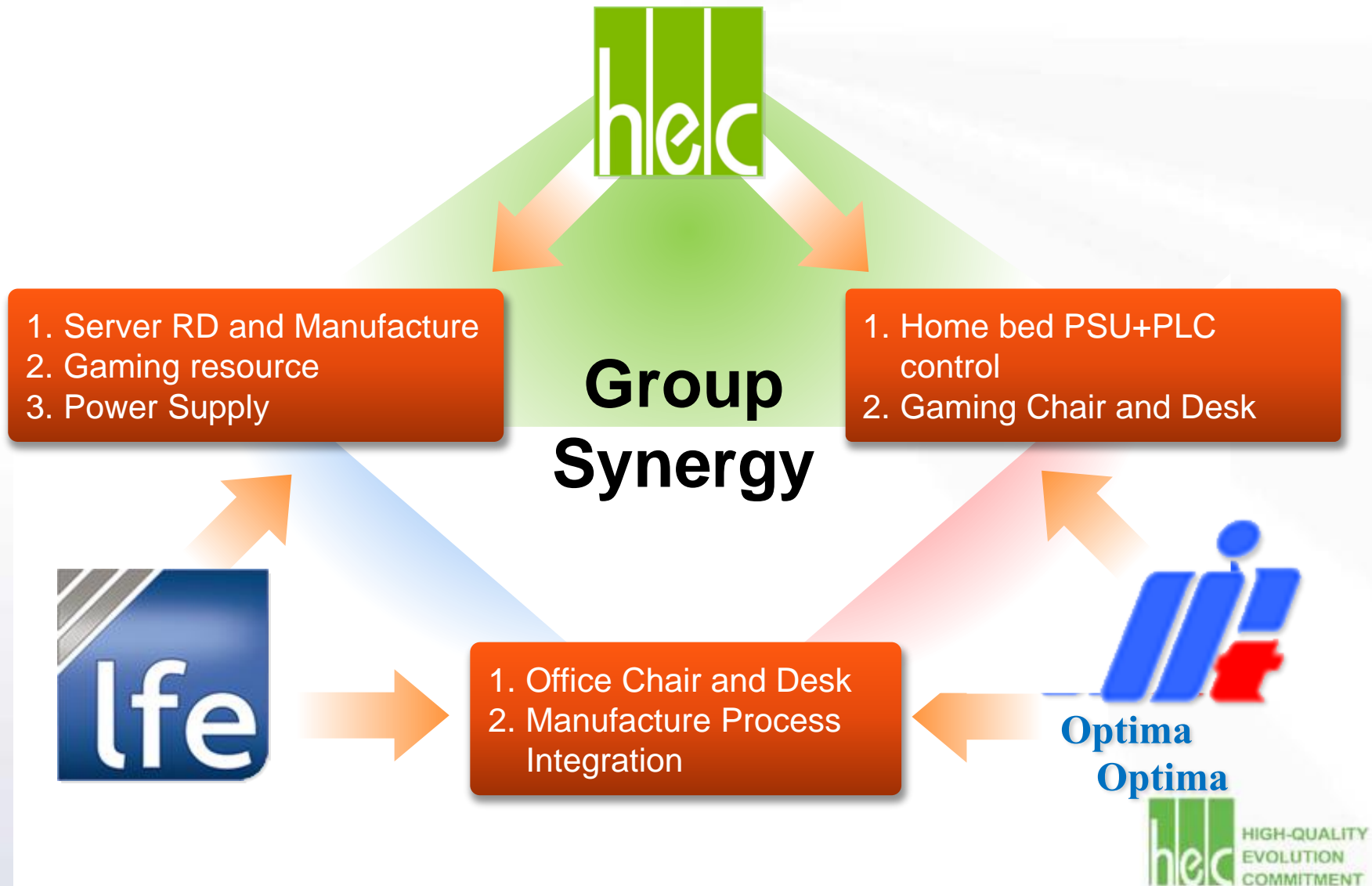


Gaming Chair/Desk



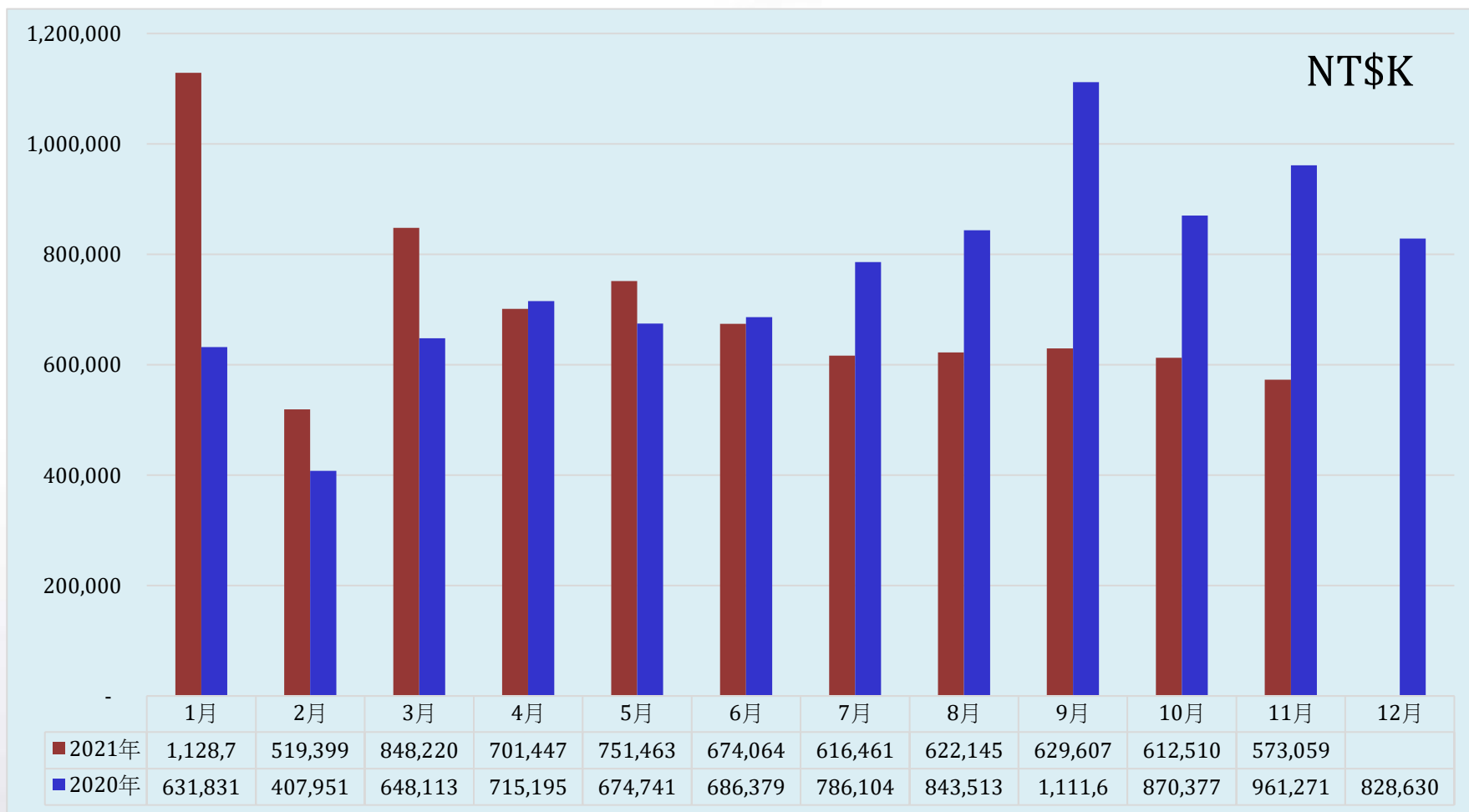


Group Synergy





HEC Group Monthly Sales





HEC Group Profit

NT\$K	2021 1-3Q	2020 1-3Q	YoY%
Net Revenue	6,518,142	6,526,422	-0.13%
COGS	5,351,567	5,267,996	1.59%
Gross Profit	1,166,575	1,258,426	-7.30%
Operating Profit	308,820	459,089	-32.73%
Net Income after tax	315,639	467,213	-32.44%
Attributable to Shareholders of the Parent	244,860	373,998	-34.53%
EPS after Tax (NT\$)	2.17	3.37	
GPM	18%	19%	
Operating Profit ratio	13%	12%	
Net Profit after Tax ratio	5%	7%	



HEC Group Revenue Share by Product

	2021 1-3Q	%	2020 1-3Q	%
Case	2,183,747	34%	2,200,318	34%
PSU	1,894,551	29%	2,014,638	31%
Private Brand	1,414,654	22%	1,123,374	17%
Medical and Furniture Bed	538,561	8%	793,777	12%
Others	486,629	7%	394,315	6%
Total	6,518,142	100%	6,526,422	100%



Dividend Policy

Year	EPS (NT)	Cash Div (NT)	Div Payout Ratio
2020	4.21	3.1	74%
2019	2.50	2	80%
2018	3.70	2.25	61%
2017	2.15	2	93%
2016	3.81	2.2	58%



Thank you.

Q&A