

**Compucase Enterprise Co., Ltd.**

No. 225, Lane 54, An Ho Road Sec. 2 Tainan, Taiwan, R.O.C  
Tel: +886-6-356-0606  
Fax: +886-6-356-0505  
E-mail: [service@hec-group.com.tw](mailto:service@hec-group.com.tw)  
<http://www.hec-group.com.tw>

**Power Master Co., Ltd.**

亞碩國際通路股份有限公司  
No. 225, Lane 54, An Ho Road Sec. 2 Tainan, Taiwan, R.O.C  
Tel: +886-6-355-7567  
Fax: +886-6-355-9567  
E-mail: [service-tw@hec-group.com.tw](mailto:service-tw@hec-group.com.tw)  
<http://www.hec-group.com.tw/blog>

**Wei Yu International Trading (Shen Zhen) Co., Ltd.**

偉裕國際貿易(深圳)有限公司  
No.12, Qing Long Road, Long Hua Street, Bao An District,  
Shenzhen, Guangdong Province, China  
Tel: +86-0755-28122966#2187  
Fax: +86-0755-28122940  
E-mail: [weiyu@hec-group.com.cn](mailto:weiyu@hec-group.com.cn)  
<http://www.hec-group.com.tw/cn>

**China Factory**

Building A, No.12 Qinglong Road Longhua Street Baoan District,  
Shenzhen, Guangdong Province, China  
Tel: +86-755-28122966  
Fax: +86-755-28122965

**Compucase Japan Co., Ltd.**

3-24-5-7F Shin-Yokohama, Kouhoku-ku, Yokohama-City,  
Kanagawa-ken, Japan 〒222-0033  
Tel: +81-45-470-5948  
Fax: +81-45-470-5958  
E-mail: [support@hec-group.jp](mailto:support@hec-group.jp)  
<http://www.hec-group.jp>

**HEC Korea Co., Ltd.**

#506, Unitechvill, 1141-2 Baeksuk-Dong, ilsandong-Gu, Koyang-City,  
Kyunggi-Do, Korea  
Tel: +82-31-909-7080  
Fax: +82-31-909-7090  
Email: [carmen@hec-group.co.kr](mailto:carmen@hec-group.co.kr)  
<http://www.hec-group.co.kr>

**Compucase UK. Ltd.**

15 Alston Drive, Bradwell Abbey, Milton Keynes Buckinghamshire  
MK13 9HA, U.K.  
Tel: +44-1908-317666  
Fax: +44-1908-317607  
E-mail: [info@compucase-hec.co.uk](mailto:info@compucase-hec.co.uk)  
<http://www.compucase-hec.co.uk>

**Compucase Europe GmbH**

Im Huelsenfeld 9, D-40721 Hilden, Germany  
Tel: +49-2103-98810  
Fax: +49-2103-988118  
E-mail: [info@compucase.de](mailto:info@compucase.de)  
<http://www.compucase.de>

**Compucase Corporation**

16720 Chestnut Street, Unit. C City of Industry, CA 91748, U.S.A.  
Tel: +1-626-336-6588  
Fax: +1-626-333-9288  
E-mail: [sales@compucaseusa.com](mailto:sales@compucaseusa.com)  
<http://www.hecgroupusa.com>

**Taipei Office**

5F-7 No.77, SEC.1, XINTAI 5TH RD., XIZHI DIST,  
NEW TAIPEI CITY 221, TAIWAN, R.O.C.  
Tel:02-26988911  
E-mail:[service@hec-group.com.tw](mailto:service@hec-group.com.tw)  
CHINA TEL:+86-755-2812-2966



# PC Case

## Computer Housing



© 2012.06 Compucase Enterprise Co., Ltd.  
All right reserved.  
All trademarks are property of their respective owners.  
® Specifications subject to change without prior notice.

[www.hec-group.com.tw](http://www.hec-group.com.tw)

# Company Profile

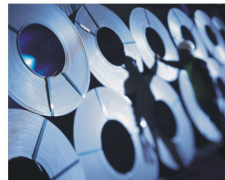
Founded in 1979, HEC Group is today a leading global manufacturer and designer of PC Cases, Power Supplies and Rackmount Chassis, serving customers around the world.



In addition to our headquarters in Taiwan, HEC Group has a manufacturing facility in China and an established network of branch offices in USA, Germany, UK, Japan, Korea and China. This combination enables us to provide our customers with competitive manufacturing costs and the most efficient and immediate service worldwide.

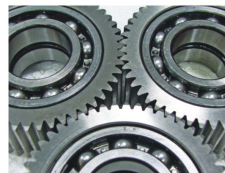


Our world class engineering and design expertise, help us with delivering total solution to the first-tier system integrators. Today, our R&D groups continue to evolve and refine our technologies, constantly improve performance levels, and simultaneously reduce manufacturing costs.



Innovative products, combined with dedication to customers and the consistent delivery of high-quality products, are the foundation for HEC's growth and leadership in today's highly competitive computer industry.

HEC delivers computer case, rackmount chassis, pedestal server, switching power supplies, open frame power supplies, DC to DC converters, adapters and electronic ballasts. We have also developed our own line of switching power supplies for the retail market.



Today the "HEC" brand is recognized as a world-class brand among OEM customers, system integrators, industrial users and retail customers.

[www.hec-group.com.tw](http://www.hec-group.com.tw)

## INDEX



Product Specifications	3
<b>ATX</b>	
6G Series	5
6S Series	7
66 Series	9
62 Series	11
6B Series	13
6C Series	15
63 Series	17
6A Series	19
<b>Micro ATX</b>	
6K Series	20
6T Series	21
<b>Desktop</b>	
7K Series	23
<b>Mini ITX</b>	
8K Series	25
<b>Front Bezels</b>	27

## Product Specifications



ATX Midi Tower

Series	6G	6S	66
Housing Material	0.6/0.7 mm thickness SECC or SGCC	0.6 mm thickness SECC or SGCC	0.5 mm thickness SECC or SGCC
Housing Type	Midi tower	Midi tower	Midi tower
Form Factor	ATX / Micro ATX	ATX / Micro ATX	ATX / Micro ATX
Expansion Slots	7 slots	7 slots	7 slots
Chassis Dimensions (WxHxD)	210 x 460 x 470 mm (8.3 x 18.1 x 18.5 inch)	190 x 410 x 457 mm (7.5 x 16.1 x 18.0 inch)	190 x 410 x 457 mm (7.5 x 16.1 x 18.0 inch)
Drive Space (Ex./In.)	5.25" x 6/0, 3.5" x 0/4 or 5.25" x 5/0, 3.5" x 1/4	5.25" x 2/0 or 3.5" x 1/4,	5.25" x 9/0 or 5.25" x 5/0, 3.5" x 1/3 (with 3x3.5" HDD cagex1 & FDD bracketx1)
Net Weight	6.36 kg / 13.99 lb	6.38 kg	6.1 kg / 13.44 lb
Gross Weight	7.97 kg / 17.54 lb	7.43 kg	7.18 kg / 15.76 lb
Cuft	3.20	3.51	2.73
Q'ty container 20'	320	258	350
Q'ty container 40'	650	534	732
Q'ty container 40' HQ	730	616	826



ATX Midi Tower

Micro ATX Mini Tower

Series	6A	6K	6T
Housing Material	0.7 mm thickness SECC	0.7 mm thickness SECC or SGCC	0.6 mm thickness SECC or SGCC
Housing Type	Midi tower	Mini tower	Mini tower
Form Factor	ATX / Micro ATX	Micro ATX	Micro ATX
Expansion Slots	7 slots	4 slots	4 slots
Chassis Dimensions (WxHxD)	210 x 460 x 430 mm (8.3 x 18.1 x 16.9 inch)	180 x 375 x 390 mm (7.1 x 14.8 x 15.4 inch)	175 x 356 x 350 mm (6.9 x 14.0 x 13.7 inch)
Drive Space (Ex./In.)	5.25" x 4/0, 3.5" x 2/5	5.25" x 2/0, 3.5" x 2/1 or 2/2	5.25" x 2/0, 3.5" x 2/1 or 3.5"x2/2
Net Weight	8.98 kg / 19.70 lb	5.10 kg / 11.20 lb	4.37 kg / 9.64 lb
Gross Weight	10.15 kg / 22.30 lb	6.45 kg / 14.10 lb	5.53 kg / 12.19 lb
Cuft	2.58	1.89	1.42
Q'ty container 20'	385	548	696
Q'ty container 40'	815	1,121	1,445
Q'ty container 40' HQ	925	1,259	1,680

## Product Specifications



ATX Midi Tower

Series	62	6B	6C	63
Housing Material	0.6 mm thickness SECC or SGCC	0.6 mm thickness SECC	0.6/0.5 mm thickness SECC or SGCC	0.5 mm thickness SECC or SGCC
Housing Type	Midi tower	Midi tower	Midi tower	Midi tower
Form Factor	ATX / Micro ATX	ATX / Micro ATX	ATX / Micro ATX	ATX / Micro ATX
Expansion Slots	7 slots	7 slots	7 slots	7 slots
Chassis Dimensions (WxHxD)	190 x 410 x 445 mm (7.5 x 16.1 x 17.5 inch)	190 x 410 x 457 mm (7.5 x 16.1 x 18.0 inch)	190 x 410 x 445 mm (7.5 x 16.1 x 17.5 inch)	190 x 410 x 457 mm (7.5 x 16.1 x 18.0 inch)
Drive Space (Ex./In.)	5.25" x 4/0, 3.5" x 2/4	5.25" x 4/0, 3.5" x 2/4	5.25" x 4/0, 3.5" x 2/3	5.25" x 4/0, 3.5" x 2/4
Net Weight	5.80 kg / 12.78 lb	5.80 kg / 12.78 lb	5.80 kg / 12.78 lb	5.8 kg / 12.78 lb
Gross Weight	6.88 kg / 15.10 lb	6.88 kg / 15.10 lb	6.88 kg / 15.10 lb	6.88 kg / 15.10 lb
Cuft	2.4	2.67	2.02	2.16
Q'ty container 20'	389	350	496	454
Q'ty container 40'	819	732	1,022	945
Q'ty container 40' HQ	960	826	1,149	1,048



Micro ATX Desktop

Mini ITX Desktop

Series	7K	8K
Housing Material	0.7 mm thickness SECC or SGCC	0.7 mm thickness SECC or SGCC
Housing Type	Desktop	Desktop
Form Factor	Micro ATX	Mini ITX
Expansion Slots	4 slots (low profile)	N/A
Chassis Dimensions (WxHxD)	367 x 99 x 350 mm (14.4 x 3.9 x 13.8 inch)	268 x 70 x 290 mm (10.5 x 2.76 x 11.4 inch)
Drive Space (Ex./In.)	5.25" x 1/0, 3.5" x 1/1	Slim ODD x 1, 3.5"x 0/1
Net Weight	4.00 kg / 8.82 lb	2.3 kg / 5.05 lb
Gross Weight	4.75 kg / 10.47 lb	2.7 kg / 5.93 lb
Cuft	0.99	0.54
Q'ty container 20'	876	1,706
Q'ty container 40'	1,831	3,439
Q'ty container 40' HQ	2,099	3,876

# 6G Series

## ATX Form Factor

### Features & Benefits

- ✓ Optional front/rear-mounted 12 cm fan\*1 pc, top-mounted 12/14 cm fan\*2pcs, bottom-mounted 12/14 cm fan\*1 pc
- ✓ Screw-less for 5.25" device installation . Optional screw-less for add-on-card device installation
- ✓ Optional EMI solution and front access USB & Audio
- ✓ Easy-to-open side cover and fan holder for easy installation and maintenance
- ✓ Easy detachable HDD shockproof trays for easy installation.
- ✓ Bottom-mounted PSU design.
- ✓ Removable filter beneath chassis bottom for dust-proof
- ✓ Retaining holes for easy installation of CPU coolers.
- ✓ Cable routing design for cable management.
- ✓ Support ATI 4870, 5970, and Nvidia 265/285/295 graphic card



6GR8



1 12/14 cm fan \* 2 pcs (option)

2 12 cm fan \* 1 pc (option)

3 Add-on card screw-less kit (option)

4 Side cover mesh version B (option)

5 Bottom mounted PSU design, removable filter and removable foot stand on chassis bottom (option)

6 Screwless for 5.25" drive bay

7 Plastic pin and shook-proof rubber and support 2.5"HDD/SSD installation

7 Frontward or backward HDD cable output

7 Removable HDD cage and HDD trays enable easy installation without stretching hands into the case

8 12 cm fan \* 1 pc (option)

9 Retaining holes for easy installation of CPU coolers

10 Support ATI 4870, 5970, and Nvidia 265/285/295 graphic card

11 Cable management design

11 Cable management design

### Front bezels



6GR8

### Specification

Model	6G
Housing Material	0.6/0.7 mm thickness SECC or SGCC
Housing Type	Midi tower
Form Factor	ATX / Micro ATX
Expansion Slots	7 slots
Chassis Dimensions (WxHxD)	210 x 460 x 470 mm (8.3 x 18.1 x 18.5 inch)
Drive Space (Ex./In.)	5.25" x 6/0, 3.5" x 0/4 or 5.25" x 5/0, 3.5" x 1/4
Net Weight	6.36 kg / 13.66 lb
Gross Weight	7.97 kg / 17.54 lb
Cuft	3.20
Q'ty container 20'	275
Q'ty container 40'	590
Q'ty container 40' HQ	750

※ Installation Q'ty may be different in each panels and packing situation.

● Designed by Ascot

# 6S Series

## ATX Form Factor

### Features & Benefits

- ✓ Optional front-mounted 12cmx2 fan, rear-mounted 12cmx1 fan, side-mounted 12cmx1 fan, 12cm bottom plate fan
- ✓ Screwless design for 5.25" device and add-on card holding kit
- ✓ Key-lock ring and optional latch kit on side cover for security
- ✓ Optional front access USB3.0/2.0/HD audio
- ✓ Optional built-in & TAC 2.0
- ✓ Easy detachable HDD shockproof trays for easy installation
- ✓ 90 degree sideward HDD cage design for easy assembly
- ✓ Thumb screws for easy-to-open side cover
- ✓ Kensington lock supported



1  
Screwless for 5.25" devices installation

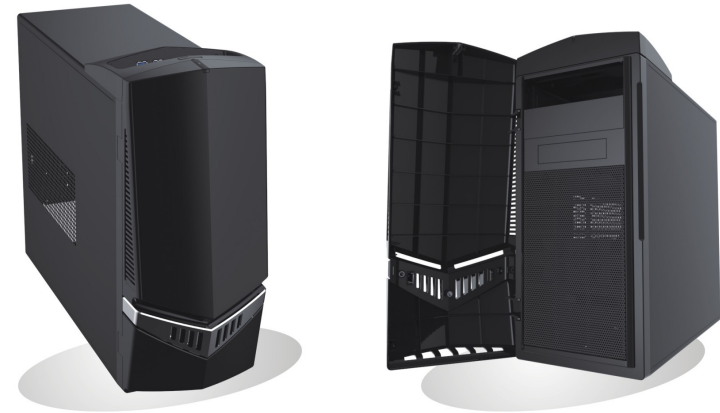
2  
Screwless for SSD/2.5"/3.5" HDD cage design

3  
Screwless add-on card devices installation (option)

4  
VGA hold down bar (option)

TAC 2.0 venting hole (option)

### Front bezels



6SJ7

### Specification

Model	6S
Housing Material	0.6 mm thickness SECC or SGCC
Housing Type	Midi tower
Form Factor	ATX / Micro ATX
Expansion Slots	7 slots
Chassis Dimensions (WxHxD)	190 x 410 x 457 mm (7.5 x 16.1 x 18.0 inch)
Drive Space (Ex./In.)	5.25" x 2/0x3.5"x1/4
Net Weight	6.38
Gross Weight	7.43
Cuft	3.51
Q'ty container 20'	258
Q'ty container 40'	534
Q'ty container 40' HQ	616

※ Installation Q'ty may be different in each panels and packing situation.

● Designed by Ascot

# 66 Series

## ATX Form Factor

### Features & Benefits

- ✓ Optional 8, 9 or 12 cm front-mounted, 8, 9 or 12 cm rear-mounted, 12 cm bottom plate fan and 12cm top cover fan
- ✓ Optional screwless for 5.25" & 3.5" & add-on card devices installation
- ✓ Support 9 5.25" drive bays relocate-able 3 x 3.5" HDD cage
- ✓ Key-lock ring
- ✓ Kensington lock hole supported
- ✓ Optional EMI solution
- ✓ Optional front access USB3.0/2.0/Audio/e-SATA
- ✓ Easy to open side cover and front panel
- ✓ Support 10.5" graph card



1 One-side-screwed design for easy installation of 5.25" drive bays and support 9 5.25" drive bays



2 Screwless design for easy installation of 5.25" drive bays and 3.5" drive bays (option)



3 Relocate-able 1 x 3.5" FDD bracket



4 Relocate-able 3 x 3.5" HDD cage (Type1 option: with HDD shockproof rubber)



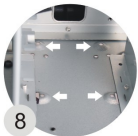
5 Relocate-able 3 x 3.5" HDD cage (Type2 option: with HDD screwless)



6 Screwless add-on-card devices installation (Option)



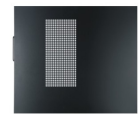
7 Power supply and a 12 cm fan install at bottom (option)



8 Support 2.5" HDD/SSD installation



9 VGA hold down bar (option)



10 TAC 2.0 venting hole (Option)



11 Side mesh door-trapezoid (option)

### Front bezels



### Specification

Model	66
Housing Material	0.5 mm thickness SECC or SGCC
Housing Type	Midi tower
Form Factor	ATX / Micro ATX
Expansion Slots	7 slots
Chassis Dimensions (WxHxD)	190 x 410 x 457 mm (7.5 x 16.1 x 18.0 inch)
Drive Space (Ex./In.)	5.25" x 9/0 or 5.25" x 5/0, 3.5" x 1/3 (with 3x3.5" HDD cagex1 & FDD bracketx1)
Net Weight	6.1 kg / 13.44 lb
Gross Weight	7.18 kg / 15.76 lb
Cuft	2.73
Q'ty container 20'	350
Q'ty container 40'	732
Q'ty container 40' HQ	826

※ Installation Q'ty may be different in each panels and packing situation.

● Designed by Ascot

# 62 Series

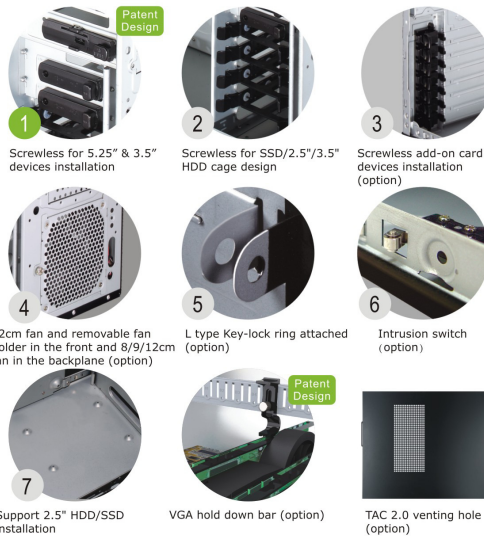
## ATX Form Factor

### Features & Benefits

- ✓ Optional front-mounted 12 cm fan, rear-mounted 8/9/12 cm fan, top-mounted 12 cm fan and side-mounted 12 cm fan
- ✓ Screwless for 5.25" & 3.5" devices installation
- ✓ Optional front access USB3.0/2.0/Audio/ e-SATA
- ✓ Key-lock ring and optional latch kits on side cover
- ✓ Optional EMI solution
- ✓ Optional built-in TAC 2.0
- ✓ Easy-to-open side cover and front panel



6218



1 Screwless for 5.25" & 3.5" devices installation

2 Screwless for SSD/2.5"/3.5" HDD cage design

3 Screwless add-on card devices installation (option)

4 12cm fan and removable fan holder in the front and 8/9/12cm fan in the backplane (option)

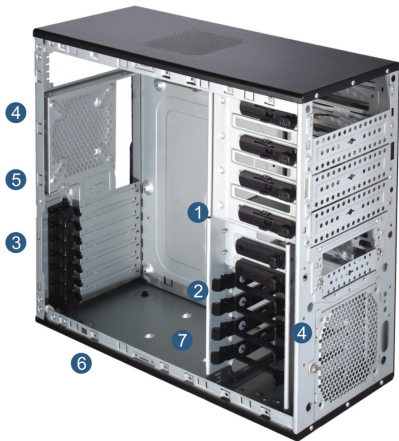
5 L type Key-lock ring attached (option)

6 Intrusion switch (option)

7 Support 2.5" HDD/SSD installation

VGA hold down bar (option)

TAC 2.0 venting hole (option)



4  
5  
3  
6  
7

### Front bezels



6218



62JA<sup>★</sup>

### Specification

Model	62
Housing Material	0.6 mm thickness SECC or SGCC
Housing Type	Midi tower
Form Factor	ATX / Micro ATX
Expansion Slots	7 slots
Chassis Dimensions (WxHxD)	190 x 410 x 445 mm (7.5 x 16.1 x 17.5 inch)
Drive Space (Ex./In.)	5.25" x 4/0, 3.5" x 2/4
Net Weight	5.80 kg / 12.78 lb
Gross Weight	6.88 kg / 15.10 lb
Cuft	2.40
Q'ty container 20'	389
Q'ty container 40'	819
Q'ty container 40' HQ	960

※ Installation Q'ty may be different in each panels and packing situation.

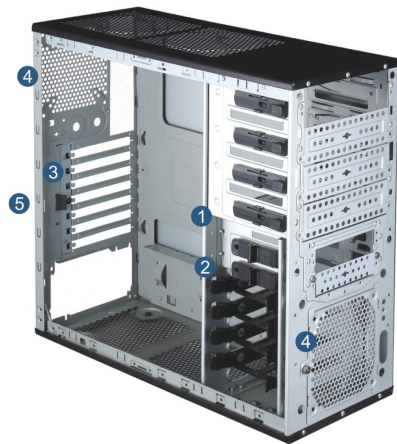
★ Designed by Abee

# 6B Series

## ATX Form Factor

### Features & Benefits

- ✓ Optional 12 cm front-mounted, 8, 9 or 12 cm rear-mounted, 12 cm bottom plate fan and side-mounted 12 cm x 2
- ✓ Screwless for 5.25" & 3.5" devices installation
- ✓ Optional screwless for add-on-card devices installation
- ✓ Key-lock ring
- ✓ Optional EMI solution
- ✓ Optional front access USB3.0/2.0/Audio/e-SATA
- ✓ Optional built-in TAC 2.0
- ✓ Easy-to-open side cover and front panel



Screwless for 5.25" & 3.5" devices installation



Screwless for SSD/2.5"/3.5" HDD cage design



Screwless add-on card devices installation (option)



12cm fan and removable fan holder in the front and 8/9/12cm fan in the backplane (option)



L type Key-lock ring attached (option)



VGA hold down bar (option)



TAC 2.0 venting hole (option)

### Front bezels



6BR3



6BJ6



6BRD

### Specification

Model	6B
Housing Material	0.6 mm thickness SECC or SGCC
Housing Type	Midi tower
Form Factor	ATX / Micro ATX
Expansion Slots	7 slots
Chassis Dimensions (WxHxD)	190 x 410 x 457 mm (7.5 x 16.1 x 18.0 inch)
Drive Space (Ex./In.)	5.25" x 4/0, 3.5" x 2/4
Net Weight	5.80 kg / 12.78 lb
Gross Weight	6.88 kg / 15.10 lb
Cuft	2.67
Q'ty container 20'	350
Q'ty container 40'	732
Q'ty container 40' HQ	826

※ Installation Q'ty may be different in each panels and packing situation.

● Designed by Ascot



# 6C Series

## ATX Form Factor

### Features & Benefits

- ✓ Optional 8, 9 or 12 cm front-mounted and rear-mounted fan
- ✓ Optional screwless for 5.25" & 3.5" & add-on card devices installation
- ✓ Key-lock ring and optional latch kits on side cover
- ✓ Optional EMI solution
- ✓ Optional front access USB/ audio or USB/ audio/ 1394/ e-SATA
- ✓ Optional built-in TAC 2.0
- ✓ Easy-to-open side cover and front panel



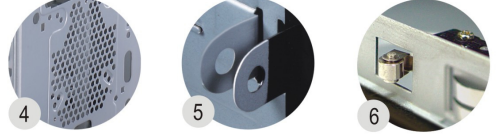
6C11



1 One-side-screwed design for easy installation of 5.25" and 3.5" drive bays

2 Screwless design for easy installation of 5.25" and 3.5" drive bays (option)

3 Screwless add-on-card devices installation (option)



4 8/9/12cm fan in the front and 8/9/12cm fan in the backplane (option)

5 L type Key-lock ring attached (option)

6 Intrusion switch (option)



7 Support 2.5" HDD/SSD installation

VGA hold down bar (option)

TAC 2.0 venting hole (option)



### Front bezels



6C60



6CR3

### Specification

Model	6C
Housing Material	0.6/0.5 mm thickness SECC or SGCC
Housing Type	Midi tower
Form Factor	ATX / Micro ATX
Expansion Slots	7 slots
Chassis Dimensions (WxHxD)	190 x 410 x 445 mm (7.5 x 16.1 x 17.5 inch)
Drive Space (Ex./In.)	5.25" x 4/0, 3.5" x 2/3
Net Weight	5.80 kg / 12.78 lb
Gross Weight	6.88 kg / 15.10 lb
Cuft	2.02
Q'ty container 20'	496
Q'ty container 40'	1,022
Q'ty container 40' HQ	1,149

※ Installation Q'ty may be different in each panels and packing situation.

● Designed by Ascot

# 63 Series

## ATX Form Factor

### Features & Benefits

- ✓ Optional 8, 9 or 12 cm front-mounted, 8, 9 or 12 cm rear-mounted and 12 cm bottom plate fan
- ✓ Optional screwless for 5.25" & 3.5" & add-on card devices installation
- ✓ Key-lock ring
- ✓ Kensington lock hole supported
- ✓ Optional EMI solution
- ✓ Optional front access USB3.0/2.0/Audio/e-SATA
- ✓ Easy to open side cover and front panel
- ✓ Support 10.5" graph card



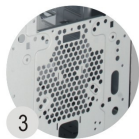
63R3



1 One-side-screwed design for easy installation of 5.25" and 3.5" drive bays



2 Screwless design for easy installation of 5.25" and 3.5" drive bays (option)



3 12 cm front-mounted and 8, 9 or 12 cm rear-mounted fan (option)



4 Screwless add-on-card devices installation (option)



5 L type Key-lock ring attached (option)



6 Power supply and a 12 cm fan install at bottom (option)



7 Top cover vents (P.S. It's not suitable for all M/B when install 12025 fans)



8 Support 2.5" HDD/SSD installation



9 VGA hold down bar (option)



10 TAC 2.0 venting hole (Option)



11 Side mesh door-trapezoid (option)

### Front bezels



63R3



63RA

### Specification

Model	63
Housing Material	0.5 mm thickness SECC or SGCC
Housing Type	Midi tower
Form Factor	ATX / Micro ATX
Expansion Slots	7 slots
Chassis Dimensions (WxHxD)	190 x 410 x 457 mm (7.5 x 16.1 x 18.0 inch)
Drive Space (Ex./In.)	5.25" x 4/0, 3.5" x 2/4
Net Weight	5.8 kg / 12.78 lb
Gross Weight	6.88 kg / 15.10 lb
Cuft	2.16
Q'ty container 20'	454
Q'ty container 40'	945
Q'ty container 40' HQ	1,048

※ Installation Q'ty may be different in each panels and packing situation.

● Designed by Ascot

# 6A Series

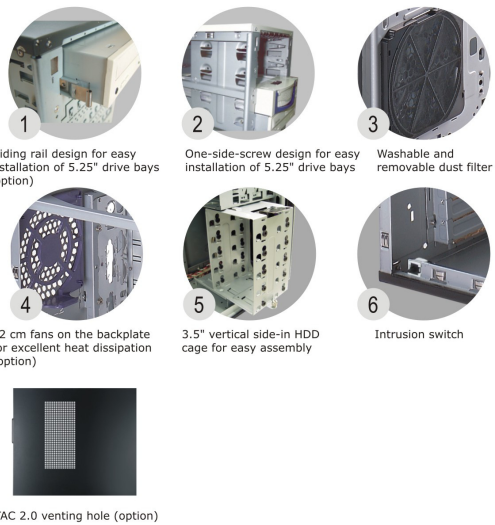
ATX Form Factor

### Features & Benefits

- ✓ Optional front-mounted and rear-mounted 12 cm fan
- ✓ Optional screwless design for add-on card holding kit
- ✓ Key-lock ring and optional latch kit on side cover for security
- ✓ Optional EMI solution
- ✓ Optional front access USB/ HD audio/ 1394
- ✓ Available for ATX power supply
- ✓ Optional built-in TAC 1.1 & TAC 2.0
- ✓ Slide-in HDD cage design
- ✓ Thumb screws for easy-to-open side cover
- ✓ Kensington lock supported
- ✓ Fan holder for easy installation and maintenance
- ✓ Optional intrusion switch for security



6AG1



### Specification

Model	6A
Housing Material	0.7 mm thickness SECC
Housing Type	Midi tower
Form Factor	ATX / Micro ATX
Expansion Slots	7 slots
Chassis Dimensions (WxHxD)	210 x 460 x 430 mm (8.3 x 18.1 x 16.9 inch)
Drive Space (Ex./In.)	5.25" x 4/0, 3.5" x 2/5
Net Weight	8.98 kg / 19.70 lb
Gross Weight	10.15 kg / 22.30 lb
Cuft	2.58
Q'ty container 20'	385
Q'ty container 40'	815
Q'ty container 40' HQ	925

※ Installation Q'ty may be different in each panels and packing situation.

# 6K Series

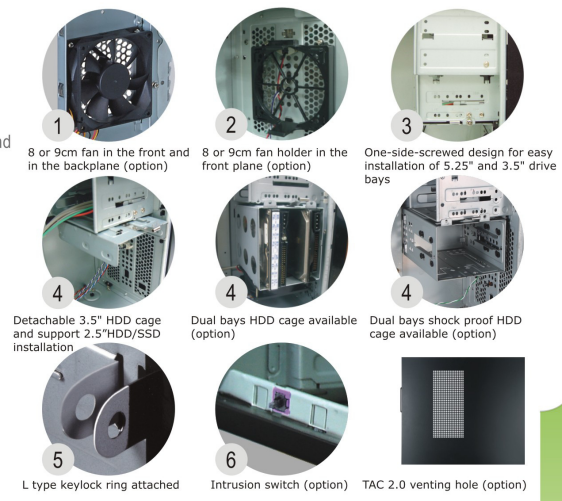
Micro ATX Form Factor

### Features & Benefits

- ✓ Optional 8 cm or 9 cm front-mounted and rear-mounted fan
- ✓ Optional screwless kit for add-on card installation
- ✓ Kensington lock hole available and optional key-lock ring, intrusion switch
- ✓ Optional EMI solution
- ✓ Optional front access USB/ audio or USB/ audio/ 1394
- ✓ Optional built-in TAC 1.1 & TAC 2.0
- ✓ Easy-to-open side cover
- ✓ One-side-screwed design for easy installation of 5.25" and 3.5" drive bay
- ✓ Optional dual bays HDD cage



6K11



### Specification

Model	6K
Housing Material	0.7 mm thickness SECC or SGCC
Housing Type	Mini tower
Form Factor	Micro ATX
Expansion Slots	4 slots
Chassis Dimensions (WxHxD)	180 x 375 x 390 mm (7.1 x 14.8 x 15.4 inch)
Drive Space (Ex./In.)	5.25" x 2/0, 3.5" x 2/1 or 2/2
Net Weight	5.10 kg / 11.20 lb
Gross Weight	6.45 kg / 14.10 lb
Cuft	1.89
Q'ty container 20'	548
Q'ty container 40'	1,121
Q'ty container 40' HQ	1,259

※ Installation Q'ty may be different in each panels and packing situation.

# 6T Series

## Micro ATX Form Factor

### Features & Benefits

- ✓ Optional 8 cm or 9 cm rear-mounted fan
- ✓ Optional screwless for 5.25" & 3.5" devices installation
- ✓ Kensington lock hole available
- ✓ Standard key-lock ring and optional intrusion switch
- ✓ Optional EMI solution
- ✓ Optional front access USB3.0/2.0/Audio/e-SATA
- ✓ Optional built-in TAC 1.1 & TAC 2.0
- ✓ Easy-removeable panel
- ✓ One-side-screwed design for easy installation of 5.25" and 3.5" drive bay
- ✓ Optional rubber for anti-shock on vertical HDD cage



6T18



1 Optional 8cm or 9cm rear-mounted cooling fan



2 One-side-screwed design for easy installation of 5.25" and 3.5" drive bay



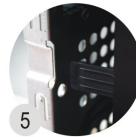
2 Patent Design  
Screwless for 5.25" & 3.5" devices installation (option)



3 Vertical 3.5" HDD cage, support 2.5"HDD/SSD installation and screwless & rubber for anti-shock (option)



4 L type keylock ring attached



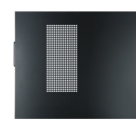
5 Easy-removeable Panel design



6 Kensington lock hole available



7 Intrusion switch (option)



TAC 2.0 venting hole (option)



- 4
- 1
- 6
- 7

### Front bezels



6T29



6T16



6T10



6T11

### Specification

Model	6T
Housing Material	0.6 mm thickness SECC or SGCC
Housing Type	Mini tower
Form Factor	Micro ATX
Expansion Slots	4 slots
Chassis Dimensions (WxHxD)	175 x 356 x 350 mm (6.9 x 14.0 x 13.7 inch)
Drive Space (Ex./In.)	5.25" x 2/0, 3.5" x 2/1 or 2/2
Net Weight	4.37 kg / 9.64 lb
Gross Weight	5.53 kg / 12.19 lb
Cuft	1.42
Q'ty container 20'	696

※ Installation Q'ty may be different in each panels and packing situation.

# 7K Series

## Micro ATX Form Factor

### Features & Benefits

- ✓ Optional 8 cm front-mounted fan
- ✓ Thumbscrews kit for upper cover
- ✓ Key-lock ring and Kensington lock hole available
- ✓ Optional EMI solution
- ✓ Optional front access USB/ audio or USB/ audio/ 1394
- ✓ Ready for HEC-270W TFX power supply
- ✓ Optional top cover filter
- ✓ One-side-screwed mounted for 5.25" and 3.5" devices
- ✓ Optional intrusion switch
- ✓ Two purposes to be placed vertical or horizontal



7KJ9



1 Excellent link bar design



2 Strong central bridge design (option)



3 One-side-screwed mounted for 3.5" device



4 One-side-screwed mounted for 5.25" device



5 L type keylock ring attached



6 Kensington lock hole support and optional latch kits on back panel



7 Optional 8cm front mounted fan



8 USB/Audio/1394 port in front panel (option)



9 TAC 2.0 vents top cover filter available (option)



10 Support 2.5" HDD/SSD installation position 1



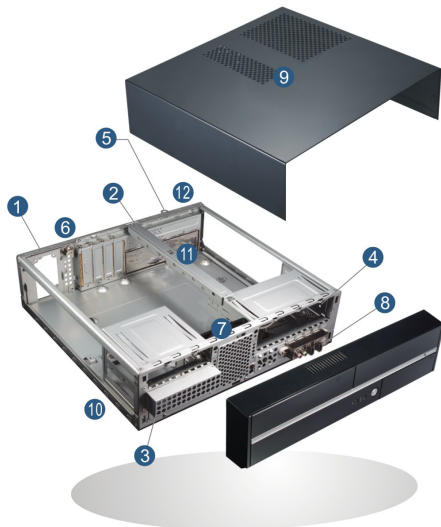
10 Support 2.5" HDD/SSD installation position 2 (optional foam to balance SSD)



11 Intrusion switch (option)



12 Intrusion switch (option)



### Front bezels



7KJ5



7K09



7KJC



### Specification

Model	7K
Housing Material	0.7mm thickness SECC or SGCC
Housing Type	Desktop
Form Factor	Micro ATX
Expansion Slots	4 slots (low profile)
Chassis Dimensions (WxHxD)	367 x 99 x 350 mm (14.4 x 3.9 x 13.8 inch)
Drive Space (Ex./In.)	5.25" x 1/0, 3.5" x 1/1
Net Weight	4.00 kg / 8.82 lb
Gross Weight	4.75 kg / 10.47 lb
Cuft	0.99
Q'ty container 20'	876
Q'ty container 40'	1,831
Q'ty container 40' HQ	2,099

※ Installation Q'ty may be different in each panels and packing situation.

# 8K Series

## Mini-ITX Form Factor

### Features & Benefits

- ✓ Optional front-right-side mounted 6 cm fan
- ✓ Key-lock ring and optional latch kit on side cover for security
- ✓ Optional EMI solution
- ✓ Optional front access USB/ HD audio/ e-SATA
- ✓ Available for HEC 100/120/160 SA/SN and 200 SA Flex ATX power supply
- ✓ Optional top cover mesh
- ✓ Optional intrusion security alarm
- ✓ Optional HDD anti-vibration rubber
- ✓ Kensington lock supported
- ✓ Standalone chassis with optional foot stand to be a slim tower



8K01



### Front bezels



8K07



8K12



### Specification

Model	8K
Housing Material	0.7 mm thickness SECC or SGCC
Housing Type	Desktop / slim tower
Form Factor	Mini ITX
Expansion Slots	0 Slots
Chassis Dimensions (WxHxD)	268 x 70 x 290 mm (10.5 x 2.76 x 11.4 inch)
Drive Space (Ex./In.)	Slim ODD x 1, 3.5"x 0/1
Net Weight	2.3 kg / 5.05 lb
Gross Weight	2.7 kg / 5.93 lb
Cuft	0.54
Q'ty container 20'	1,706
Q'ty container 40'	3,439
Q'ty container 40' HQ	3,876

\* Installation Q'ty may be different in each panels and packing situation.

### HEC 100/120/160 SA/SN & 200 SA Flex ATX power supplies

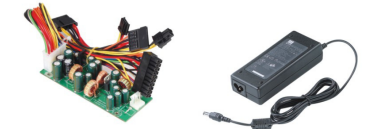


**SA series**  
AC input: Full range  
Dim.: 43x82x150mm  
40mm fan  
Active PFC

**SN series**  
AC input: 115/230V  
Dim.: 43x82x150mm  
40mm fan  
Non-PFC

Model	+3.3V	+5V	+12V1	-12V	+5Vsb	Power
HEC-100SA-7FX	Max. 10A Combine 50W	10A 10A	7.5A 9.5A	0.3A 0.3A	2A 2A	100W
HEC-120SA-7FX	Max. 10A Combine 50W	10A 10A	9.5A 114W	0.3A 3.6V	2A 10W	120W
HEC-160SA-4FX	Max. 16.7A Combine 61W	12A 90W	10A 120W	0.3A 3.6V	1.5A 7.5W	160W
HEC-200SA-2FX	Max. 16.7A Combine 80W	13A 168W	9.5A 168W	0.3A 3.6V	1.5A 7.5W	200W
HEC-100SN-7FX	Max. 10A Combine 50W	10A 90W	7.5A 90W	0.3A 3.6V	2A 10W	100W
HEC-120SN-7FX	Max. 10A Combine 50W	10A 114W	9.5A 114W	0.3A 3.6V	2A 10W	120W
HEC-160SN-7FX	Max. 15A Combine 61W	12A 144W	12A 144W	0.3A 3.6V	2A 10W	160W

### DC-DC Power Supply & Adapter



### Features & Benefits

- ✓ DC-DC ATX Power Supply, apply Mini-ITX M/B
- ✓ Input 19V operation
- ✓ High efficiency  
DC-DC power 65/90/132W output  
Adapter 75/120/150W output
- ✓ No minimum load required
- ✓ Output over-voltage protection
- ✓ RoHS Compliant

### D/D power 65W

Output Load Range	Min.	Max.	Model
+5V	0A	5.0A	HEC-AP075-19V
+12V	0A	2.0A	Vol.
-12V	0A	0.2A	+19V
+3.3V	0A	2.0A	Current
+5Vsb	0A	1.5A	3.95A

### Adapter 75W

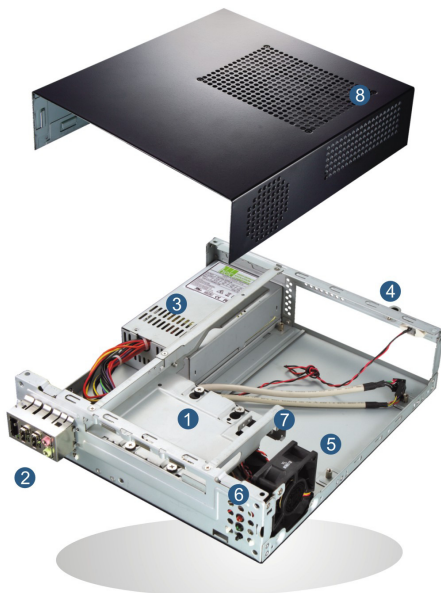
Output Load Range	Min.	Max.	Model
+5V	0A	8.0A	HEC-AP120-19V
+12V	0A	3.0A	Vol.
-12V	0A	0.2A	+19V
+3.3V	0A	5.0A	Current
+5Vsb	0A	1.5A	6.32A

### 100W

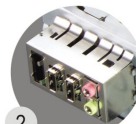
Output Load Range	Min.	Max.	Model
+5V	0A	8.0A	HEC-AP150-19V
+12V	0A	3.0A	Vol.
-12V	0A	0.2A	+19V
+3.3V	0A	5.0A	Current
+5Vsb	0A	1.5A	6.32A

### 132W

Output Load Range	Min.	Max.	Model
+5V	0A	12A	HEC-AP150-19V
+12V	0A	3.0A	Vol.
-12V	0A	0.2A	+19V
+3.3V	0A	7.0A	Current
+5Vsb	0A	1.5A	7.89A



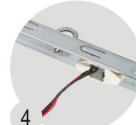
1 HDD anti-vibration rubber (option)



2 UT1 Audio/USB module with EMI cover (Optional E-SATA connector)



3 HEC 100/120/160 SA/SN & 200 SA Flex ATX power supply



4 Optional intrusion switch at back (option)



5 Front-right-side mounted 6 cm fan



6 Switch & LED Area



7 3.5" HDD bay and support 2.5"HDD/SSD installation



8 Top cover filter (option)



9 Vertical stand (option)

6G series



6GR8 ●

6A series



6A19



6A21



6AG1 ●



6AR1 ●



6AR6 ●

6S series



6SJ7

66 series



66R3 ●



66RC ●



66RF ●

62, 63 & 6B series



6218



62JA



63R3 ●



63RA ●



6BR3 ●



6BRB ●



6BRD ●



6BJ6

6T series



6T11



6T10



6T18



6T29



6T16



6TJ1



6TJ4



6TJB

6K series



6K11



6K28



6K29



6K31



6K60

6C series



6C18



6C11



6C28



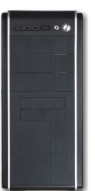
6C29



6C60



6CJ9



6CR3 ●

■ 7K series



7K09



7KJ9



7KJC



7KG2



7KJ5

■ 8K series



8K01



8K07



8K12



PC Case  
Computer Housing